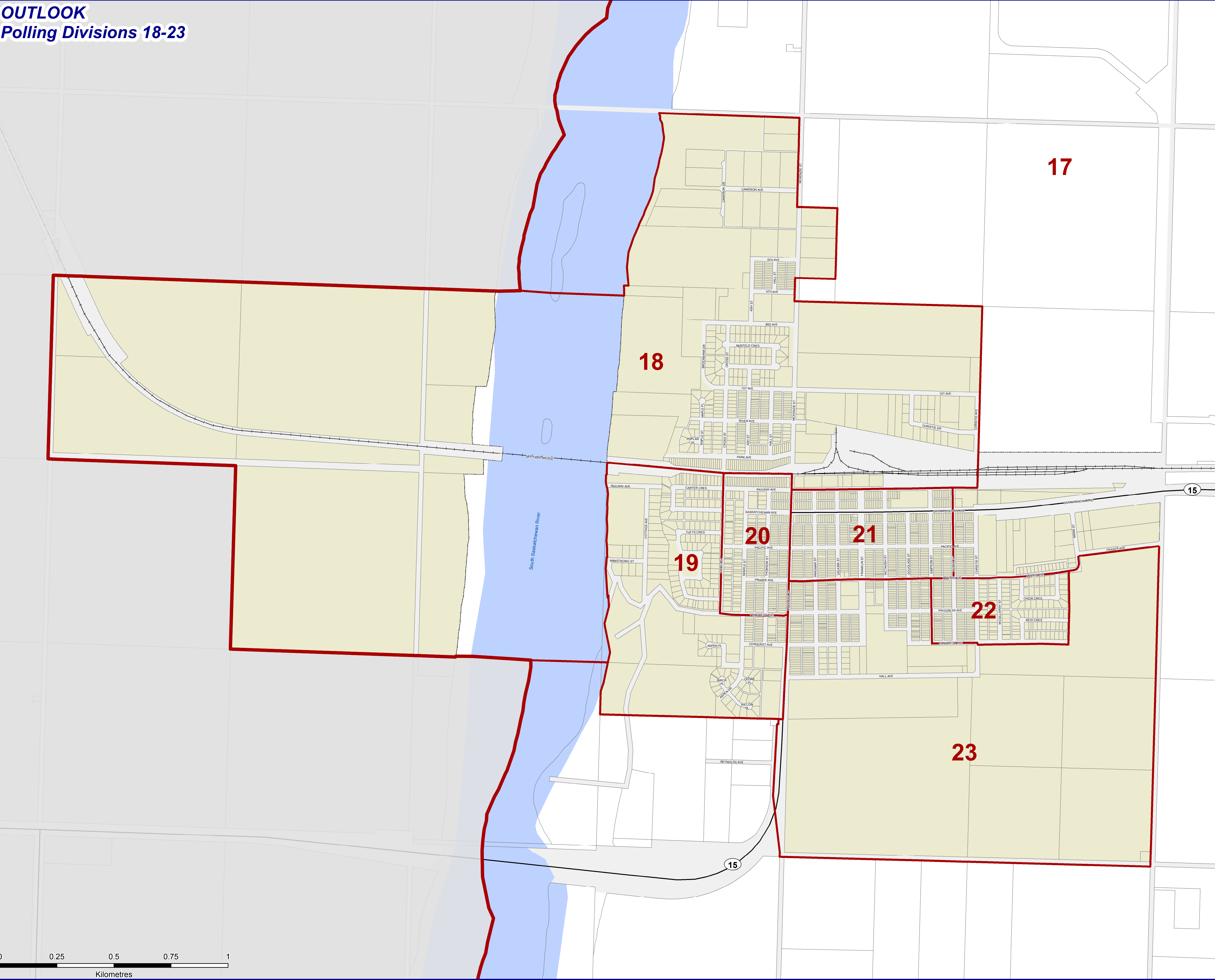
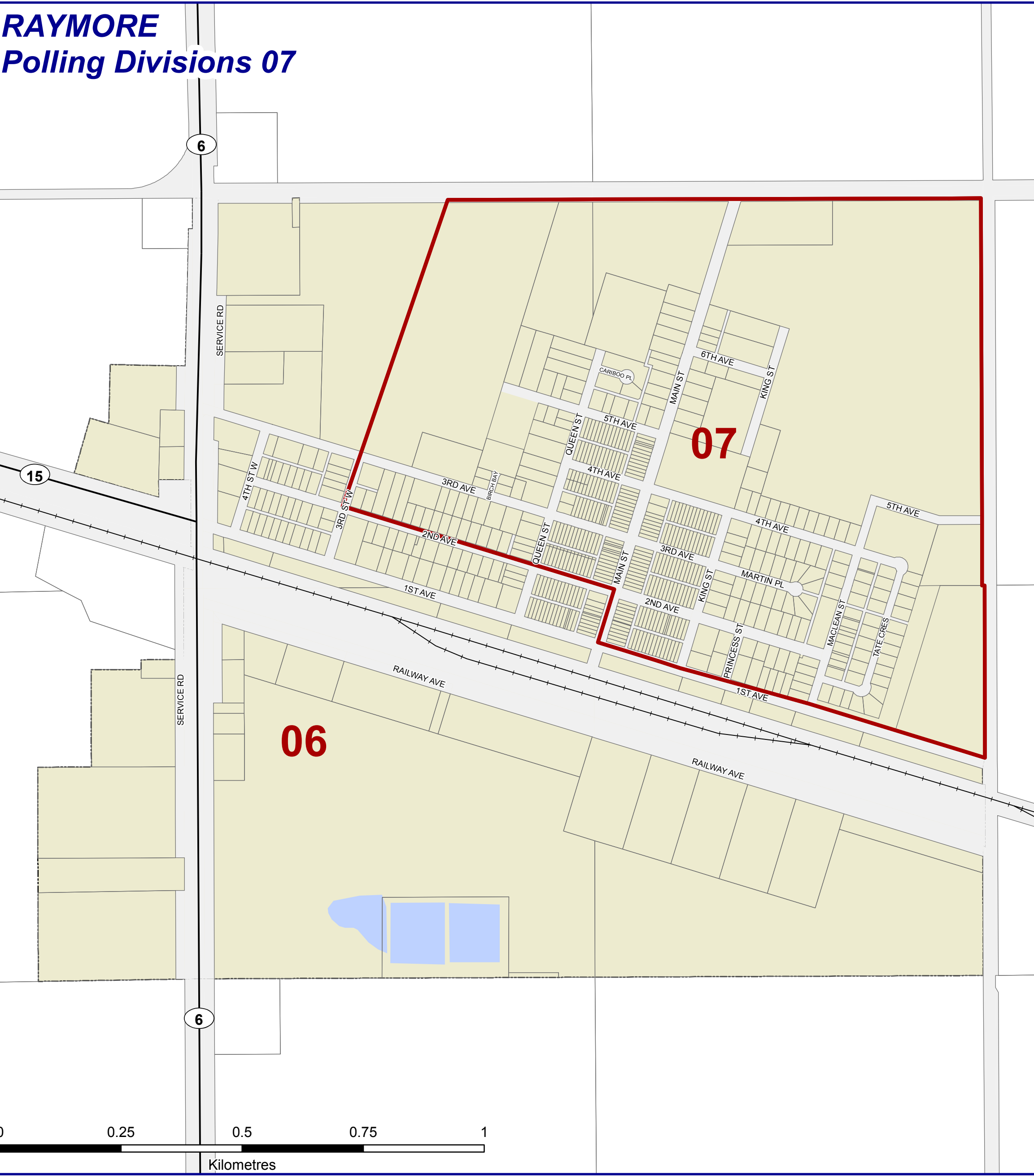


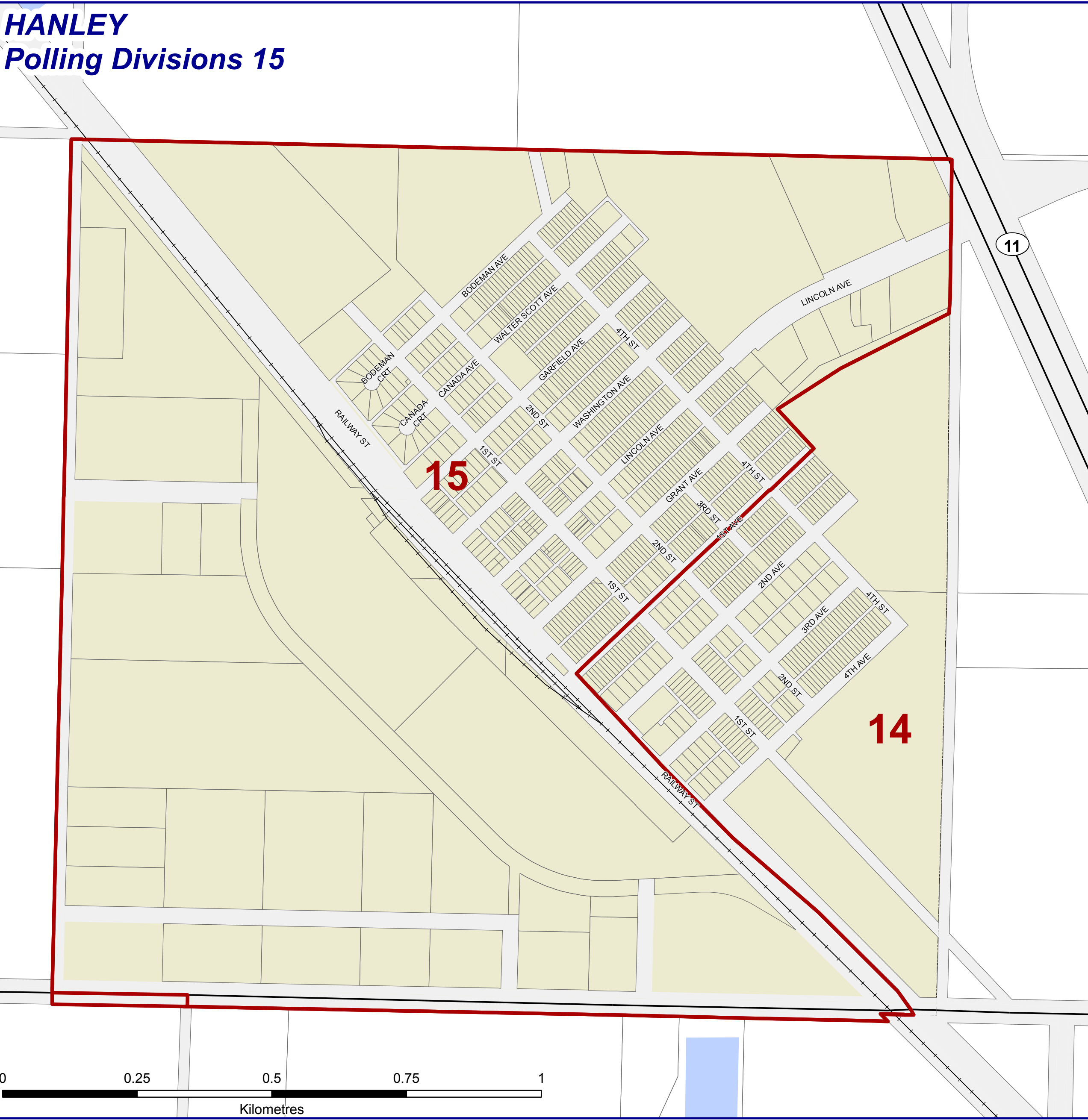
OUTLOOK
Polling Divisions 18-23



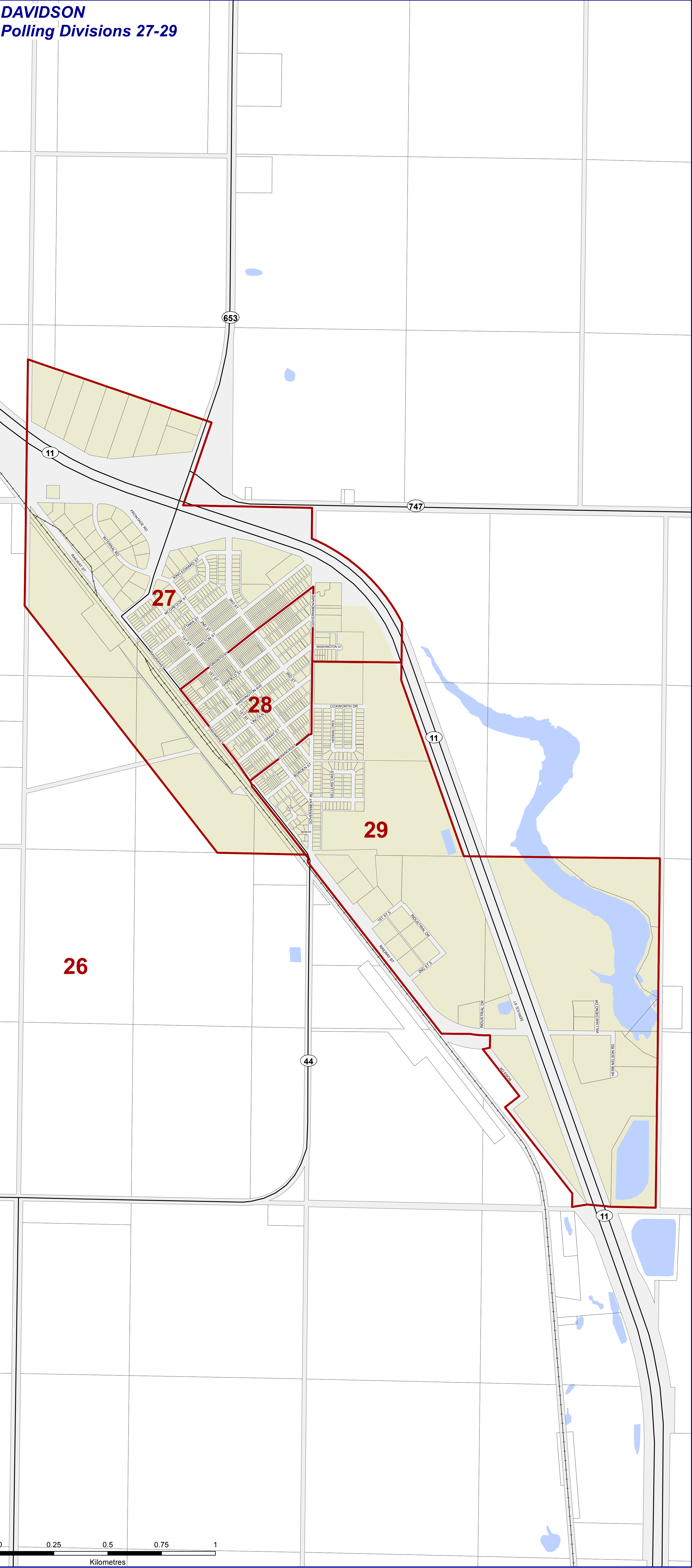
RAYMORE
Polling Divisions 07



HANLEY
Polling Divisions 15



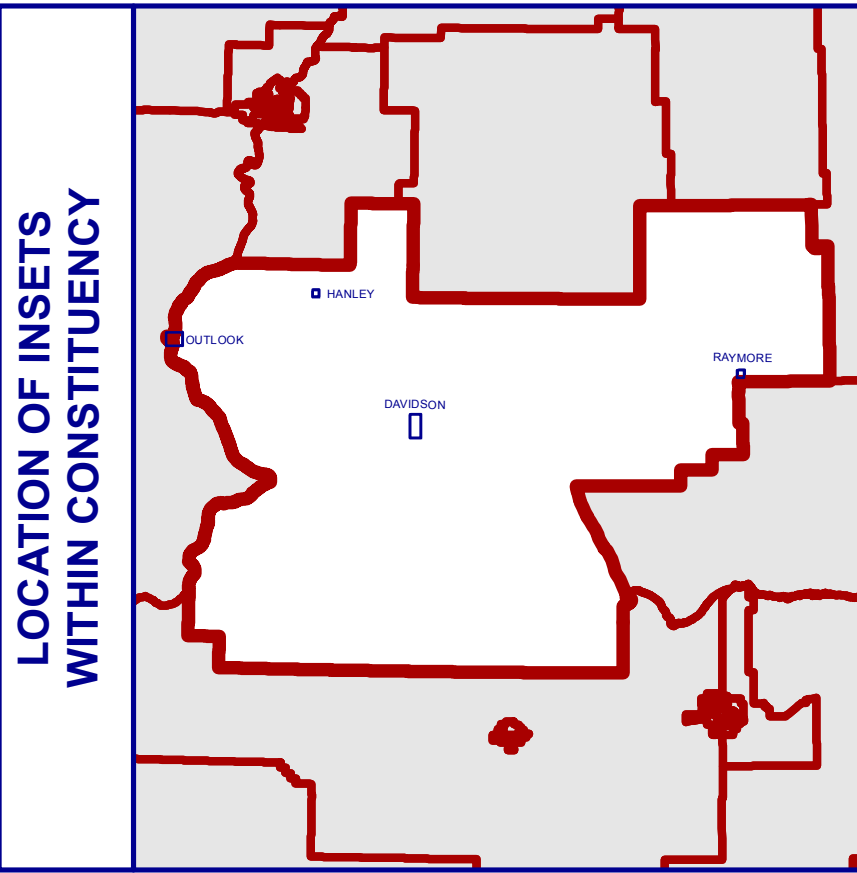
DAVIDSON
Polling Divisions 27-29



Saskatchewan
Provincial
Electoral
Constituency

Arm River
(Insets)

29th General
Election

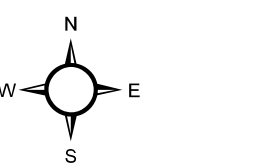


Legend

- Constituency
- Polling Division
- Urban Municipality
- Parcel
- Road/Rail Allowance
- Water
- Highway
- Railway

Inset Maps

Creation Date
20/03/2019
Version 1.3



Saskatchewan constituency boundaries are drawn in accordance with The Representation Act, 2012 and any amendments thereto. These maps have been produced solely for the purpose of identifying polling divisions within each constituency. Source data has been adapted from Information Services Corporation of Saskatchewan, Sask Cadastre (Surface) dataset and administrative overlays. Reproduced with the permission of Information Services Corporation of Saskatchewan. All data captured on this map is current as of the retrieval date of January 2019, unless otherwise stated.

