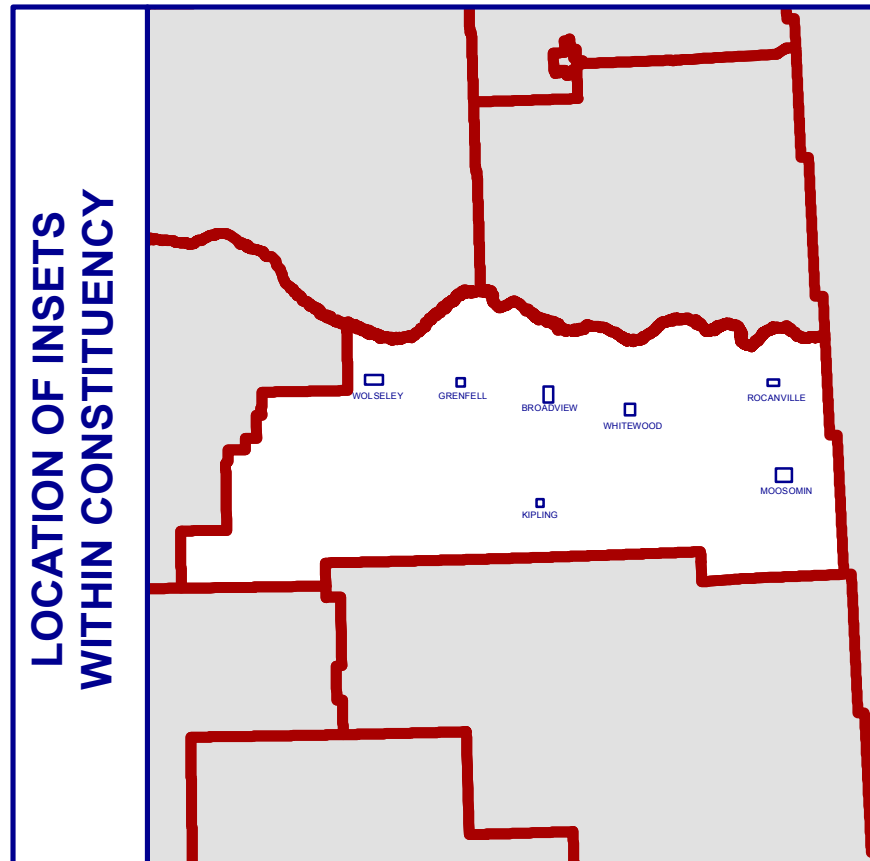


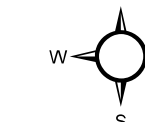
# Moosomin (Insets) 29th General Election



- ### Legend
- Polling Division
  - Urban Municipality
  - First Nation Reserve
  - Parcel
  - Road/Rail Allowance
  - Water
  - Highway
  - Railway

### Inset Maps

Creation Date  
15/04/2019  
Version 2.0

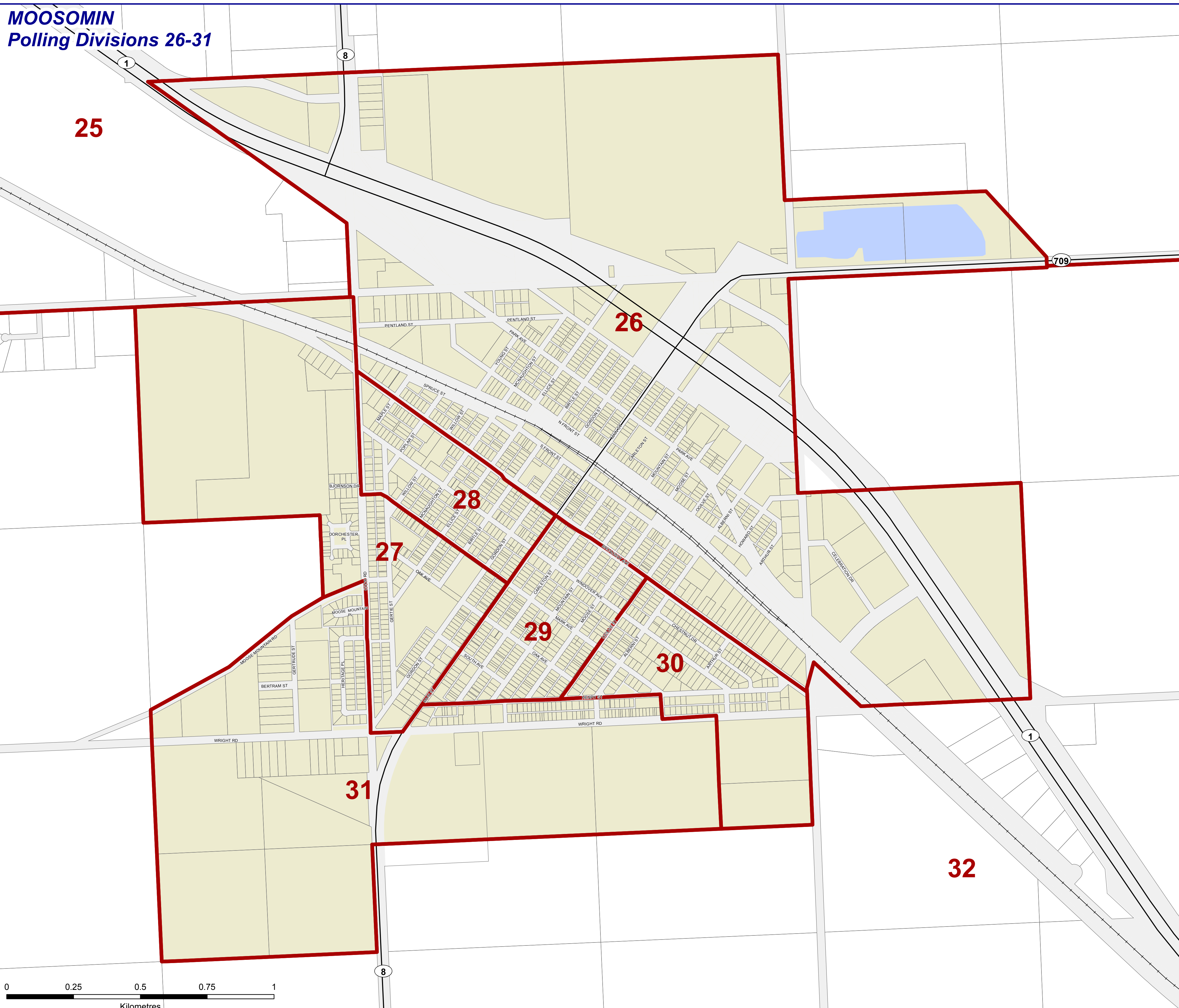


Saskatchewan constituency boundaries are drawn in accordance with The Representation Act, 2012 and any amendments thereto. These maps have been produced solely for the purpose of identifying polling divisions within each constituency. Source data has been adapted from Information Services Corporation of Saskatchewan, Sask Cadastre (Surface) dataset and administrative overlays. Reproduced with the permission of Information Services Corporation of Saskatchewan. All data captured on this map is current as of the retrieval date of January 2019, unless otherwise stated.

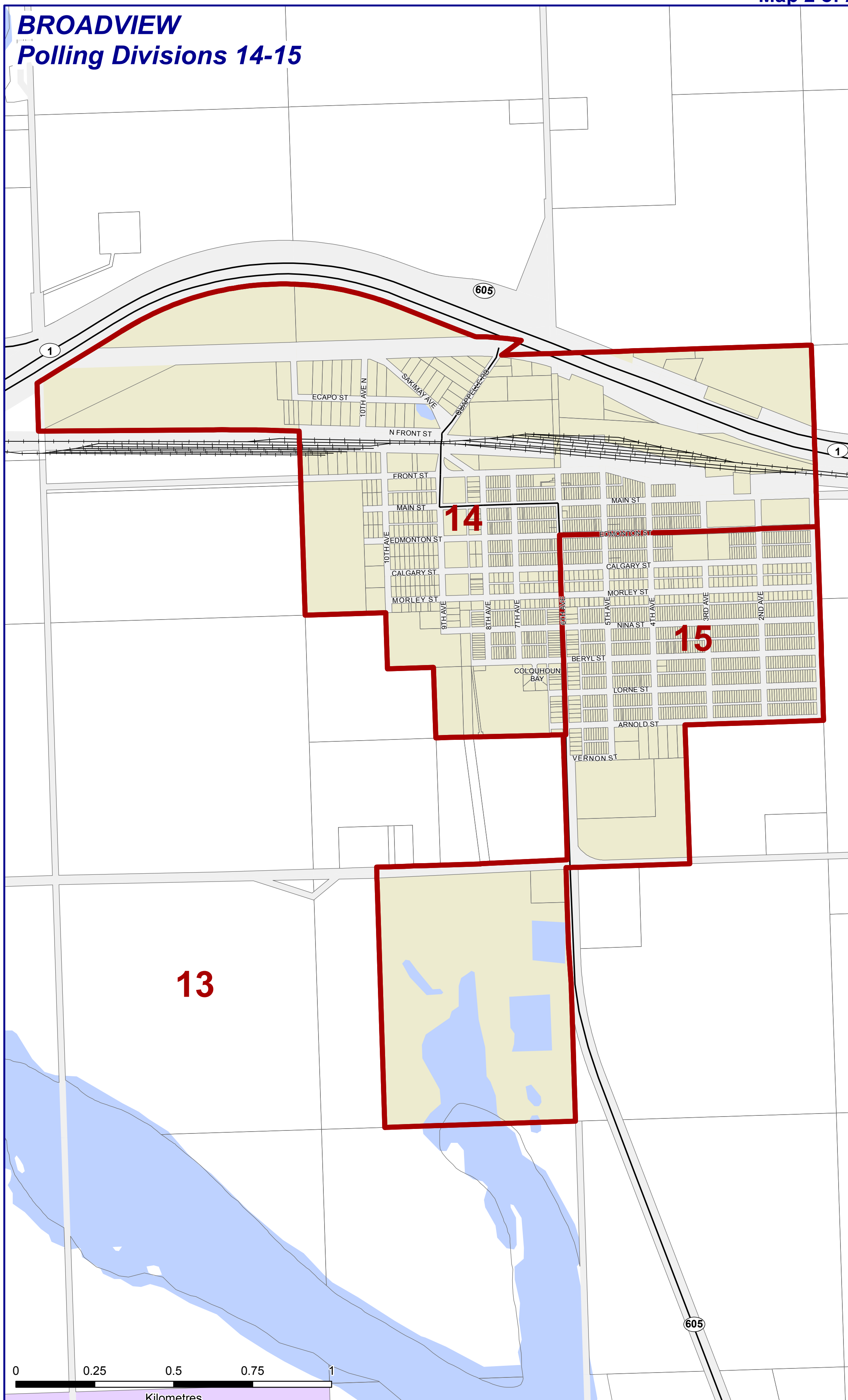


Map 2 of 2

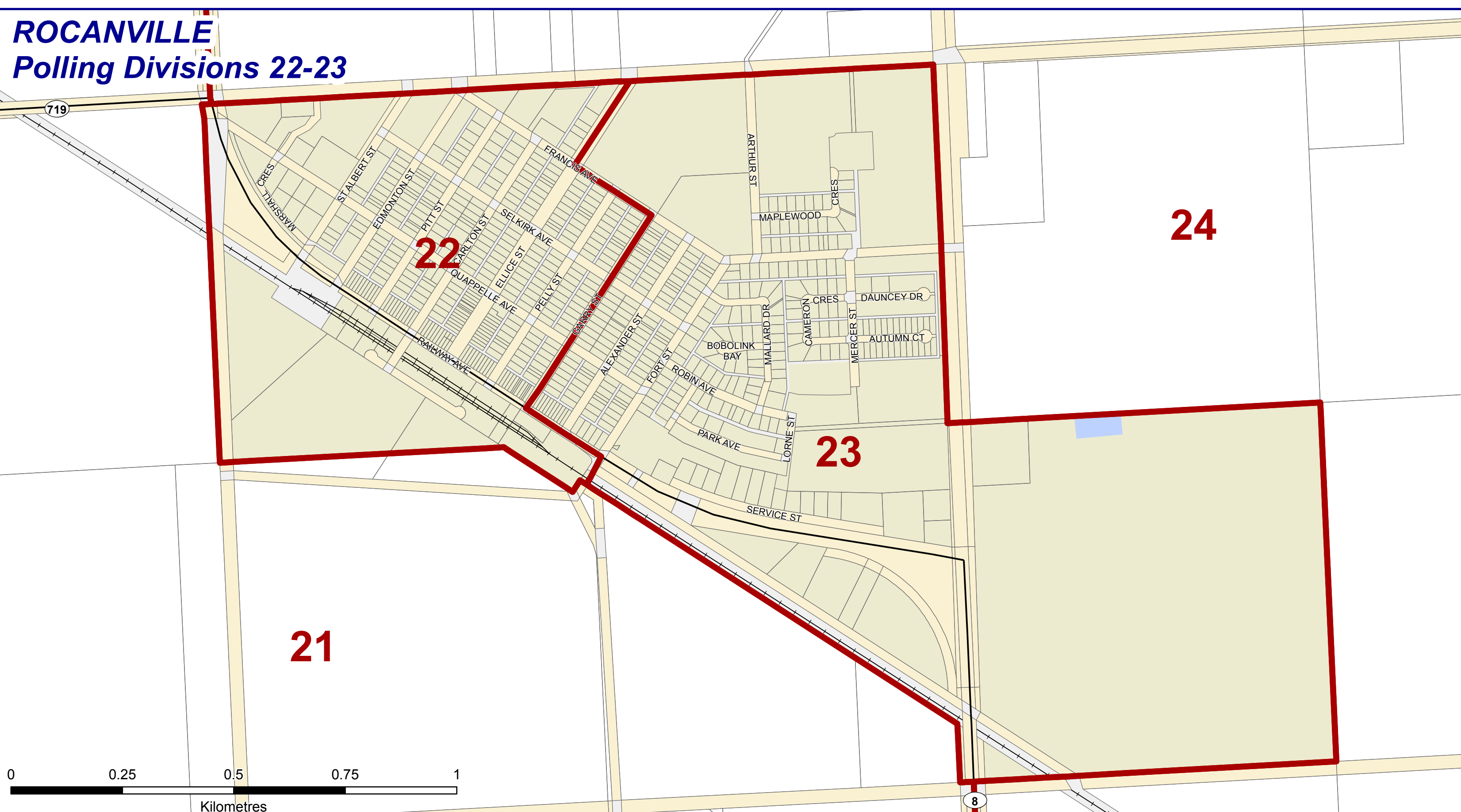
## MOOSOMIN Polling Divisions 26-31



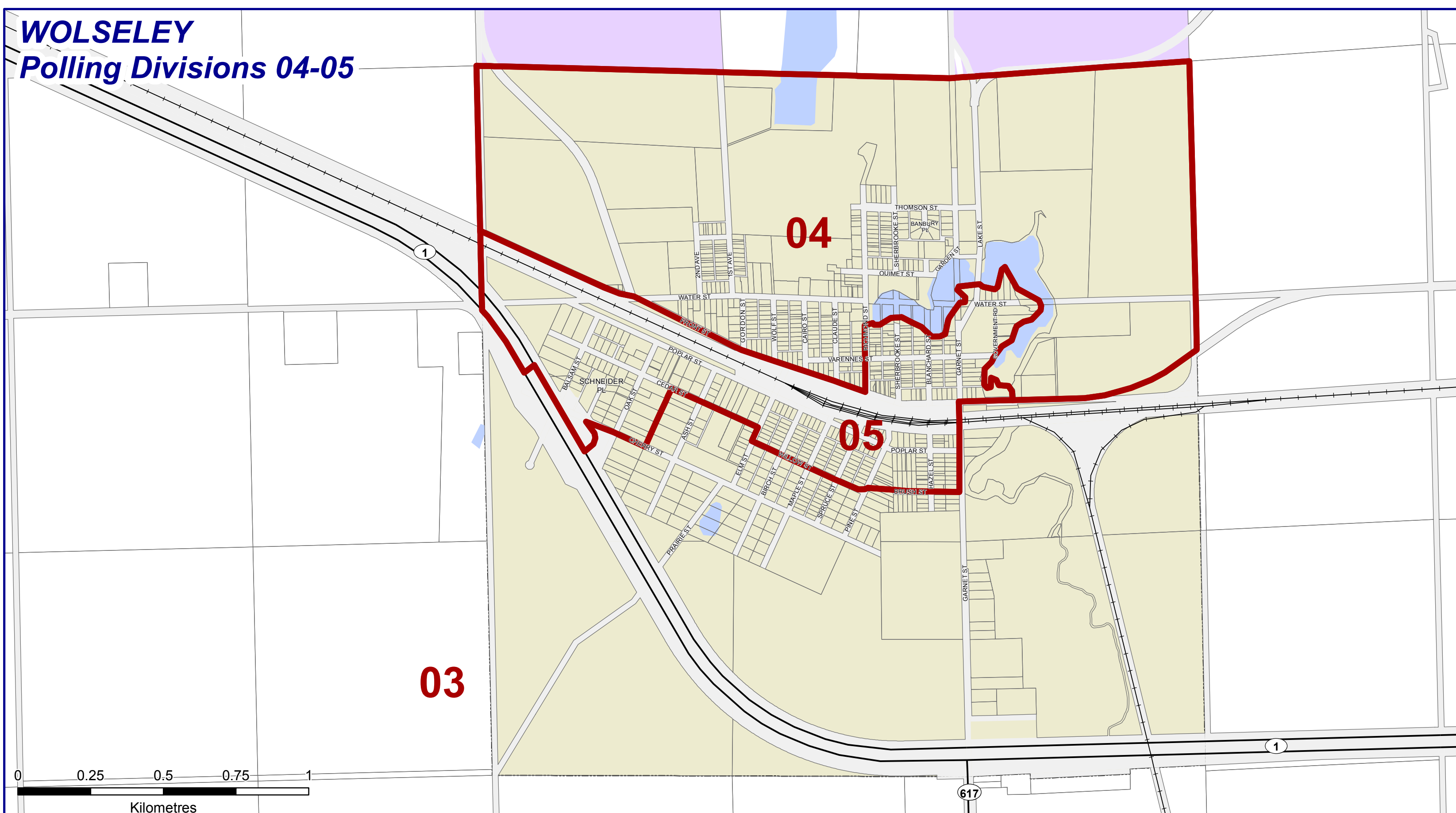
## BROADVIEW Polling Divisions 14-15



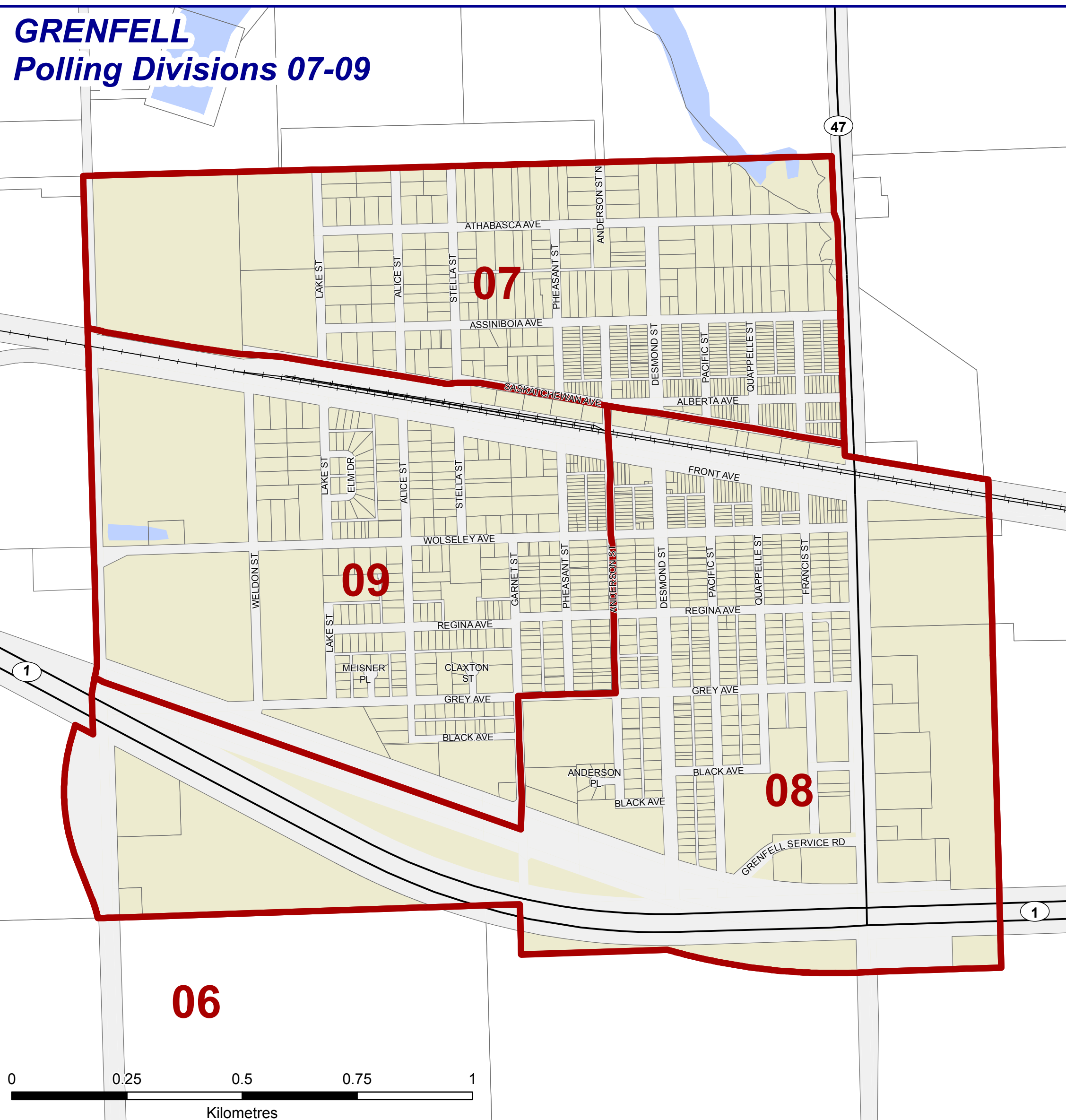
## ROCANVILLE Polling Divisions 22-23



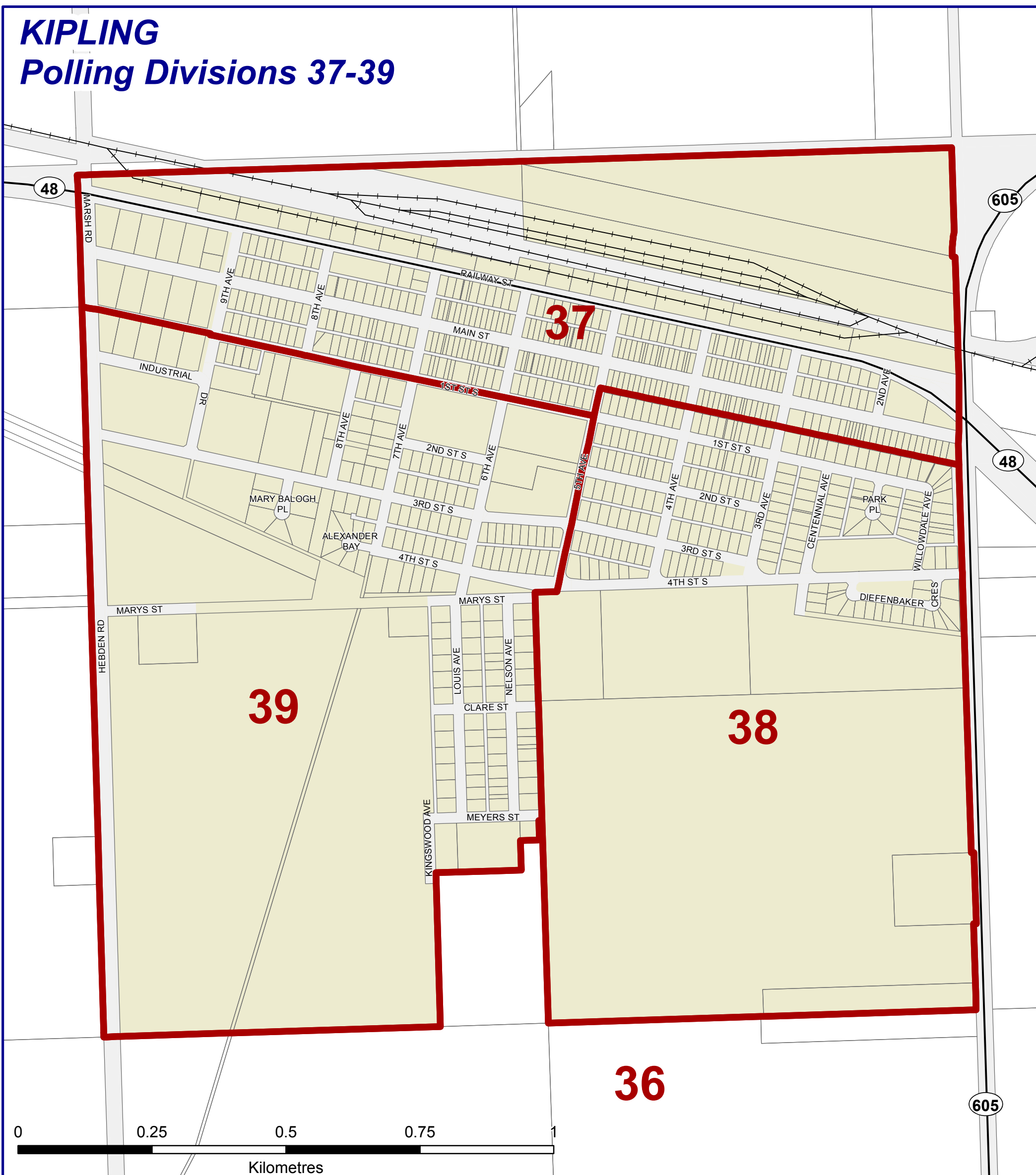
## WOLSELEY Polling Divisions 04-05



## GRENFELL Polling Divisions 07-09



## KIPLING Polling Divisions 37-39



## WHITEWOOD Polling Divisions 18-20

