

Legend

- Polling Division
- Parcel
- Highway
- Urban Municipality
- Road/Rail Allowance
- Railway
- First Nation Reserve
- Water

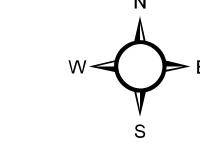
Inset Map

S

In cases of personal care facilities that have 50 or more residents a special polling division has been established. Each such "special" polling division should be designated with an 'S' preceding its single digit number, e.g. S1, S2, S3. Special Polling Divisions are separate geographic areas, with defined boundaries, and do not form part of any regular polling division.

Inset Maps

Creation Date
01/09/2015
Version 1.2



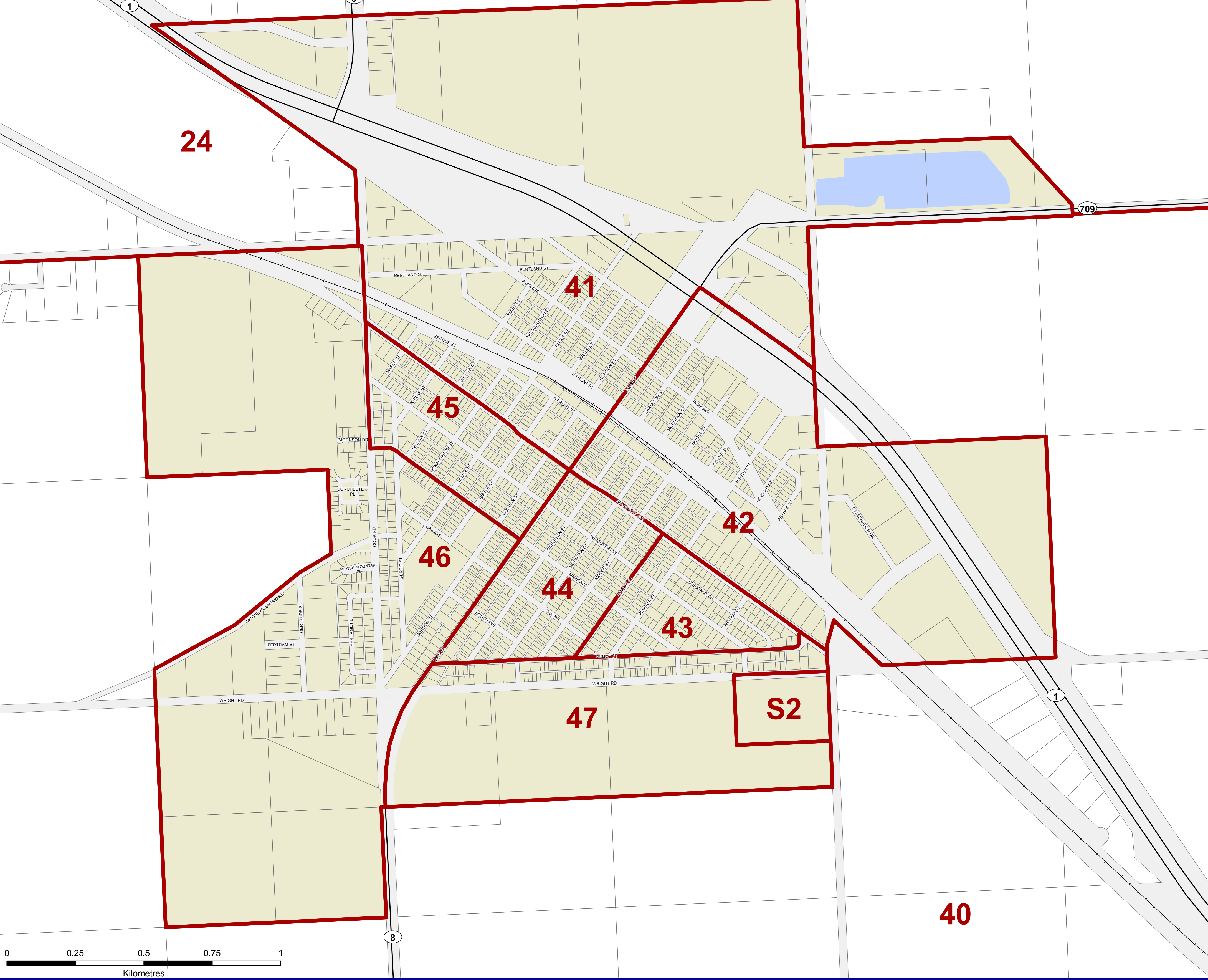
The new 81 Saskatchewan provincial constituencies will come into effect with the dissolution of the 27th Legislative Assembly just prior to the next general election that is scheduled for April 4, 2015. Saskatchewan constituency boundaries are drawn in accordance with the Representation Act, 2002 and any amendments thereto. These maps have been produced solely for the purpose of identifying polling divisions within each constituency for the 28th general election.

Source data has been obtained from Information Services Corporation of Saskatchewan, Sask Cadastre (SaskCAD) dataset and administrative overlays. Reproduced with the permission of Information Services Corporation of Saskatchewan.

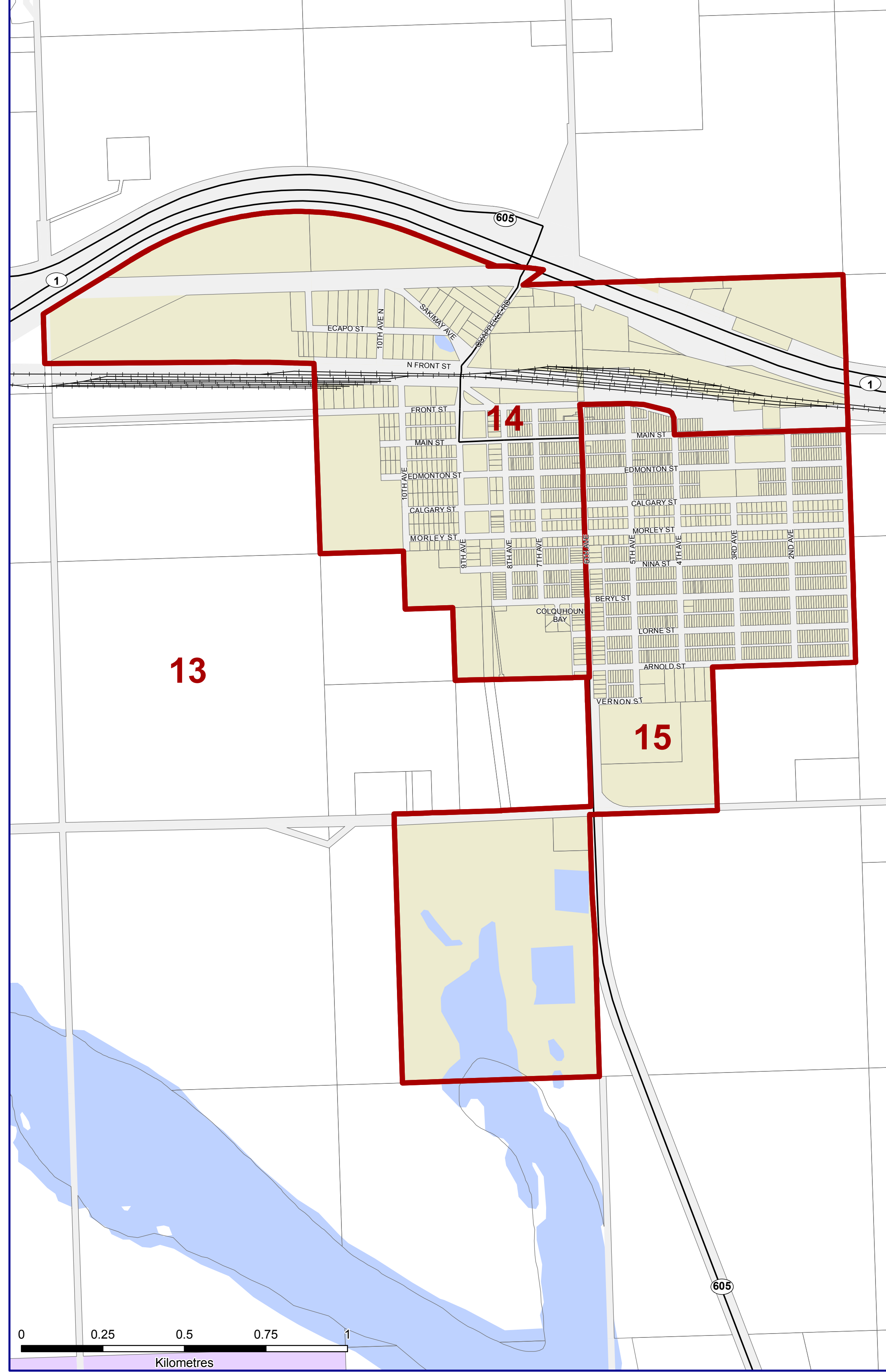
All data contained on this map is current as of the retrieval date of August 15, 2015, unless otherwise stated.



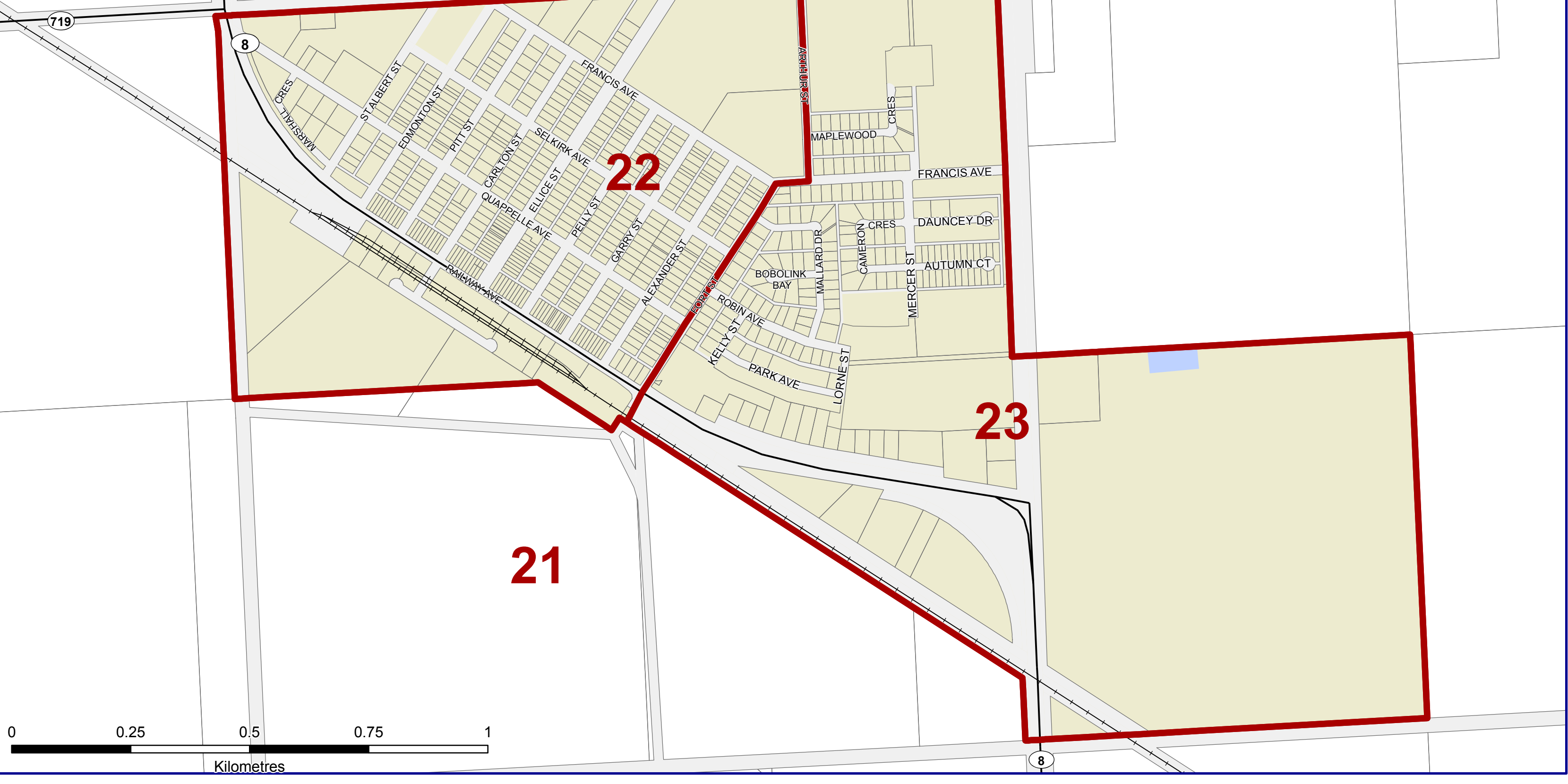
MOOSOMIN
Polling Divisions 41-47, S2



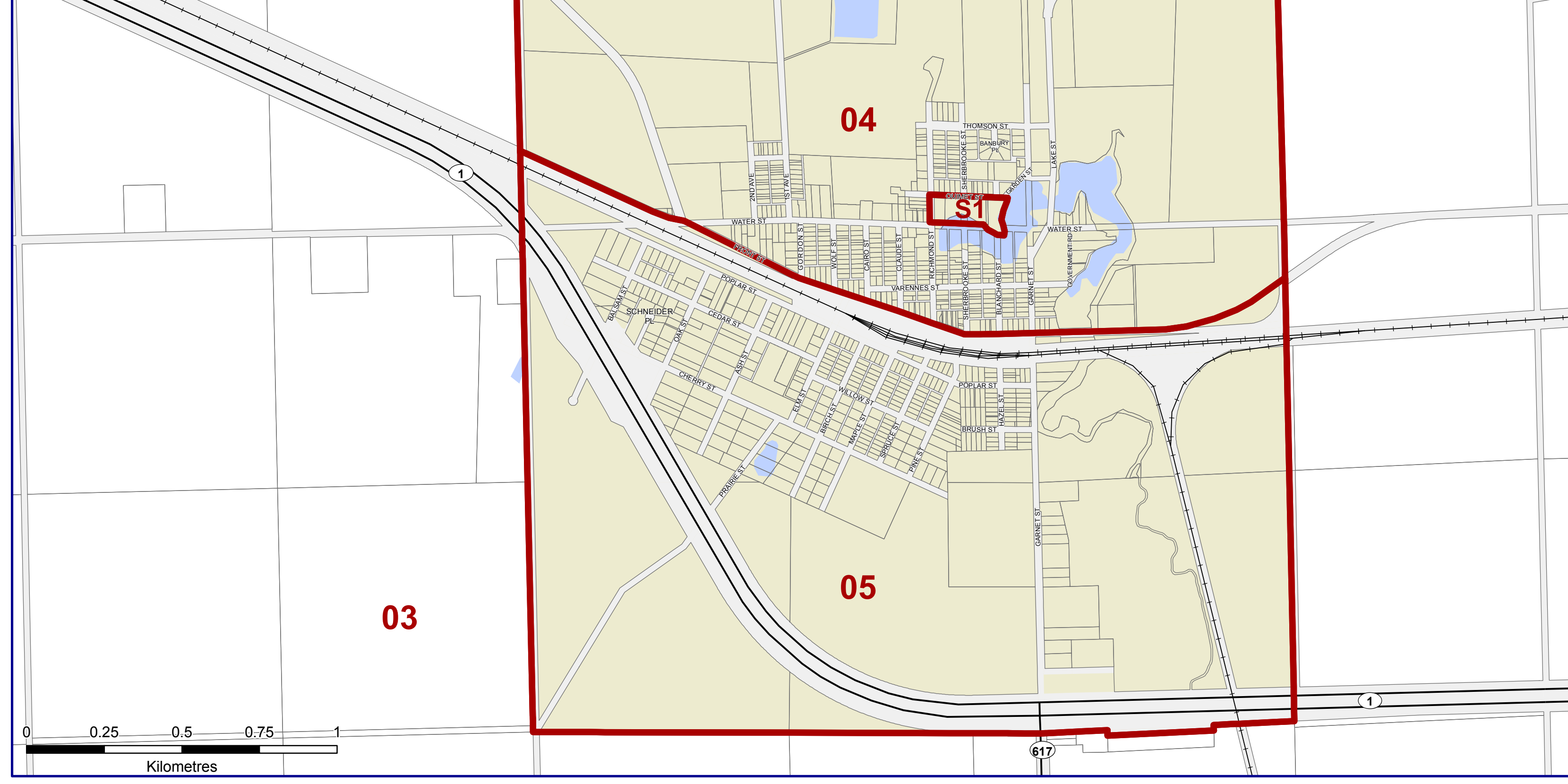
BROADVIEW
Polling Divisions 14-15



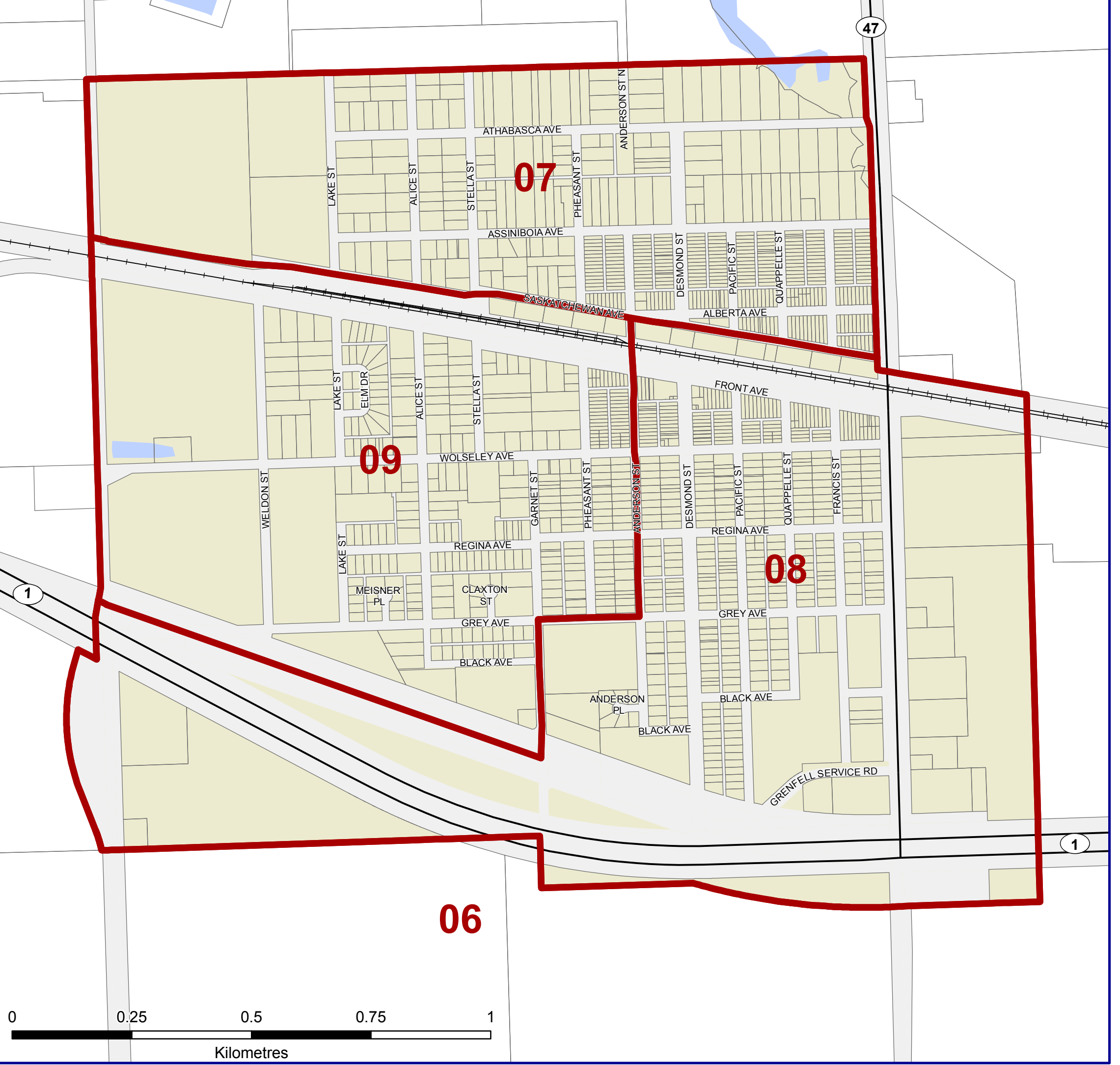
ROCANVILLE
Polling Divisions 22-23



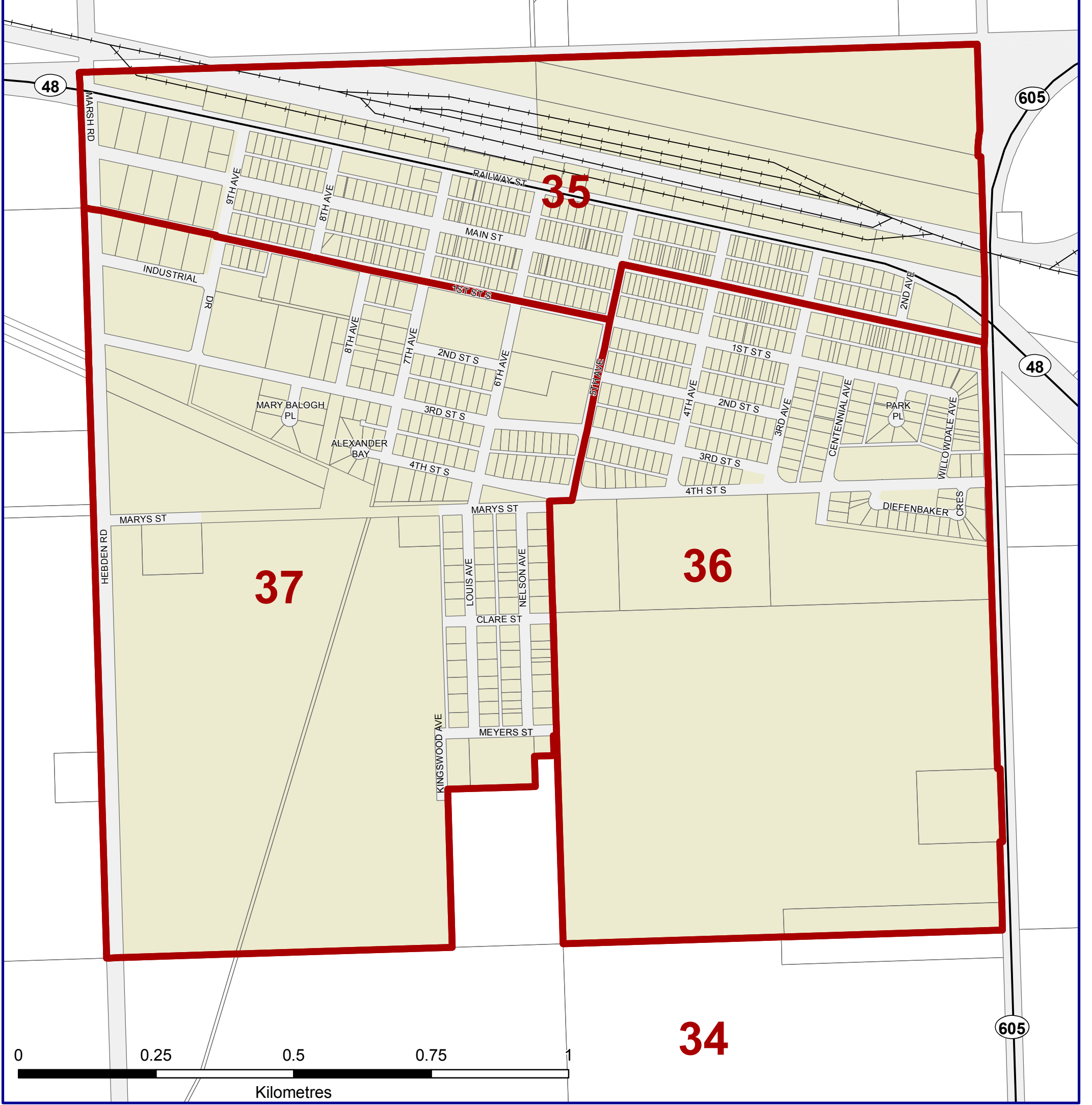
WOLSELEY
Polling Divisions 04-05, S1



GRENFELL
Polling Divisions 07-09



KIPLING
Polling Divisions 35-37



WHITEWOOD
Polling Divisions 18-20

